



# FEATURES

January | February | March 2025



SDI (North America) Inc.  
www.sdi.com.au/en-us

## SDI CEMENTS

# RIVA CEM AUTOMIX

RESIN MODIFIED GLASS IONOMER LUTING CEMENT

## SUPERIOR BOND, HIGH STRENGTH AND LESS WASTE

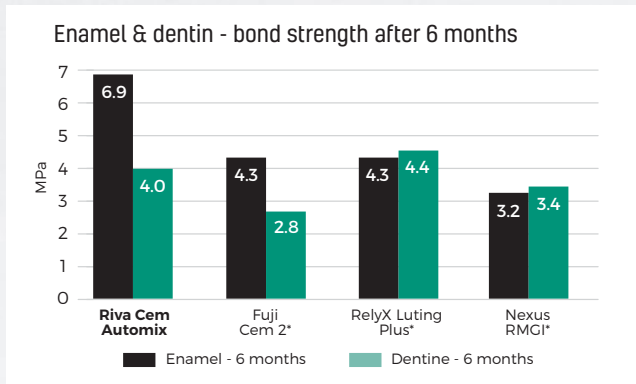
Riva Cem Automix is a self-curing, radiopaque, fluoride releasing paste/paste resin modified glass-ionomer luting cement. It is indicated for the permanent cementation of metal and ceramic restorations. The automix tip attachment offers convenience over traditional hand mixed cement systems

### LESS CEMENT WASTE

Riva Cem Automix offers more tips than any other leading cement. Each supplied tip has less waste than other cements, providing you with more material for more patients.



SCAN FOR  
INFORMATION  
ON RIVA CEM  
AUTOMIX



Study: In vitro properties of different resin-modified glass-ionomer cements  
Prof. Dr. Alessandro Loguercio and Alessandra Reis (Brazil)



## BUY 1 GET 1 FREE\*

INTRODUCTORY RISK FREE  
TRIAL LIMIT ONE PER OFFICE

2 SYRINGE KIT MSRP \$110.00

## CLINICAL CASE



Photos courtesy:  
Dr Ben Alvarez, MO, USA



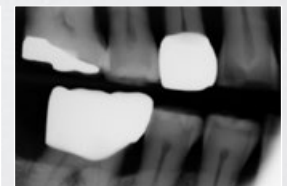
1. Crown preparation.



2. Seat the Zirconia crown.  
Excess cement tack light cured.



3. Excess cement removed with  
an explorer.



4. Post-operative cementation  
radiograph confirms  
successful cement removal.

# SDI WHITENING

## TAKE-HOME WHITENING

### 5+2\* BUY 5, GET 2 FREE

CREATED BY SDI

# POLA

ADVANCED TOOTH WHITENING SYSTEM



## POLA DAY

HYDROGEN PEROXIDE BASED ADVANCED TRAY TOOTH WHITENING SYSTEM

- Available in **7.5%** and **9.5%** hydrogen peroxide applications
- From 30 minutes once a day
- Contains fluoride
- Available in mini kit and 10 Syringe Kit



## POLA NIGHT

CARBAMIDE PEROXIDE BASED ADVANCED TRAY TOOTH WHITENING SYSTEM

- Available in **10%**, **16%** and **22%** carbamide peroxide
- From 45 minutes once a day
- Contains fluoride
- Available in mini kit and 10 Syringe Kit



## POLA DAY CP

SUPER FAST TRAY TOOTH WHITENING SYSTEM!

- Available in **35% carbamide peroxide**
- From just 15 minutes per day tray wear time
- Contains fluoride
- Neutral pH
- Desensitising additives
- High water content



## POLA FOR ALIGNERS

STRAIGHTEN AND BRIGHTEN TOGETHER

- Available in **10%** and **35%** carbamide peroxide applications
- The greatest patient comfort in a whitening kit
- High viscosity gel ensures it can be easily and securely placed into the aligner tray, staying in place

## COMPLETE YOUR WHITENING OFFERING WITH POLA LIGHT

- No custom trays required
- Reduced patient consult time
- Entry level whitening option
- Great front desk conversation starter
- Available in Pola Day **9.5% hydrogen peroxide** and Pola Night **22% carbamide peroxide**



## IN-OFFICE WHITENING

### 3+1\* BUY 3, GET 1 FREE



## POLA RAPID

IN OFFICE TOOTH WHITENING SYSTEM

- Available in **38% hydrogen peroxide**
- Fast and simple to use:
- From 3 x 8 minute applications
- Non-stick gel for faster application and removal
- Enhanced blue gel for superior application visibility









# SDI WHITENING



Radii Xpert Curing LED Light doubles as a bleaching light.

# POLA IN-OFFICE WHITENING START UP! NEW!

Purchase the Radii Xpert LED Light and receive the following  
**IN-OFFICE WHITENING BUNDLE FREE\***

 <b>x1</b> <b>BLEACH ARCH ATTACHMENT</b>	+	 <b>x1</b> <b>POLA RAPID 1 PATIENT KIT WITH OPTRAGATE</b>	+	 <b>x1</b> <b>POLA DAY 9.5% 10 SYRINGE KIT</b>
 <b>x1</b> <b>POLA LIGHT 9.5% HP KIT</b>	+	 <b>x1</b> <b>POLA LUMINATE</b>	+	 <b>x1</b> <b>POLA STAND 2</b>

**NEW USER ONLY / LIMITED TO 1 OFFER PER OFFICE**

# SDI ADHESIVE

## ZIPBOND

THE ALL-IN-ONE ADHESIVE SOLUTION FOR EVERY SITUATION

### UNIVERSAL ADHESIVE

- Consistent bond strengths to dentin and enamel
- Wet and dry dentin bonding
- Proprietary combination of adhesive monomers including MDP
- Predictable bond strengths to indirect substrates
- Effective hybridization
- Exceptional control
- Highly esthetic
- Pleasant aroma

ZIPBOND REFILL 5mL BOTTLE



## ETCH & BOND

BUY ZIPBOND  
GET A SUPER  
ETCH BULK KIT  
**FREE\***



SUPER ETCH BULK KIT  
10 x 2mL (2.5g) syringes



## ALL COMPOSITES

5+2\*  
BUY 5, GET 2 FREE

OR

20+10\*  
BUY 20, GET 10 FREE

### UNIVERSAL COMPOSITES



#### LUNA 2

Luna 2 is SDI's standout universal composite, with a unique blend of fillers to deliver outstanding optical and mechanical properties.

- Non-stick handling that maintains its sculpted shape
- Chameleon effect for accurate shade matching
- BPA free



#### AURA EASY

Aura Easy is a universal composite available in 4 simplified shades to ensure easy restorations with reduced inventory.

- 4 shades cover 16 Vita® shades
- Non-stick and easy to sculpt
- Wear resistant with high strength



#### AURA

Aura is a universal composite ideal for layering technique to help clinicians achieve maximum aesthetics with minimal effort.

- Dentine and enamel shades
- High polishability and gloss
- High-strength and wear resistance

### FLOWABLE COMPOSITES



#### LUNA FLOW

Luna Flow is an extra strong flowable composite available in two viscosities that offer excellent mechanical and optical properties.

- Effortlessly flows to margins with thixotropic properties
- Excellent strength, radiopacity and wear resistance
- Accurate shade matching



#### AURA EASYFLOW

Aura Easyflow is a universal flowable composite available in 4 simplified shades with optimized features for every layer of use.

- 4 shades cover 16 Vita® shades
- Thixotropic for maximum control during application
- High flexural strength and radiopacity



#### WAVE

Wave is a universal flowable composite with proven mechanical properties that is available in three viscosities.

- Natural fluorescence
- Three viscosities

### BULK FILL COMPOSITES



#### AURA BULK FILL

Aura Bulk Fill is a posterior composite with a natural looking finish available in just one universal shade for easy and quick restorations. The waxy consistency is packable and non-sticky to optimize handling.

- 5mm depth of cure
- Non-stick, waxy consistency
- Low volumetric shrinkage

PLEASE SCAN FOR MORE DETAILED INFORMATION ON THE FULL RANGE OF SDI COMPOSITES.

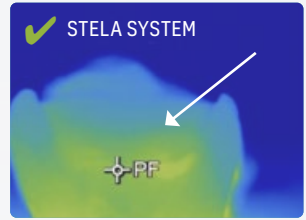
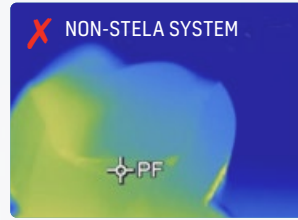


**WATCH GAP FREE:  
STELA CURES TOWARDS MARGINS**



» Based on the thermographic information indicating where the reaction is starting, it does appear the Stela Primer is accelerating the set of the Stela composite. «

Professor Richard Price



Imaging and quote courtesy of Professor Richard Price



# STELA

## THE TRUE AMALGAM ALTERNATIVE

**BPA &  
HEMA  
FREE**

- ✓ Unlimited depth of cure [self cure]
- ✓ Gap-free interface
- ✓ Only 2 steps: 15 sec prep
- ✓ High strength
- ✓ Choose: capsule or automix

SCAN FOR  
INFORMATION  
ON STELA



**BUY 2 STELA REFILLS,  
GET 1 STELA REFILL**

**FREE\***

CAPSULE REFILL KIT - 8640003  
AUTOMIX REFILL - 8640001



# SDI GLASS IONOMERS

**ANY RIVA** | **3+3<sup>x</sup>** **BUY 3, GET 3 FREE**

[EXCLUDES RIVA STAR]

## RIVA SELF CURE

When you are thinking composite resin, think again. Riva Self Cure could be your answer. Remember, no other strong restorative has such high fluoride release, little need for undercuts and the ability to remineralize tooth structure.

## RIVA LIGHT CURE

You know how wonderful a traditional glass ionomer is for your patients' healthy teeth, but you don't like the aesthetic qualities. Riva Light Cure has all the advantages of a true glass ionomer with the aesthetic life-like look of a composite.



## RIVA PROTECT

There are many situations where you know protection of the surface is required: pit and fissure sealants, root / tooth surfaces, preventing hypersensitivity, temporary restorations and temporary endodontic sealing. You will often see carious situations you would like to remineralize. Riva Protect is your weapon.



## RIVA SILVER

When you need a tough and strong core build up material or occlusal restoration, Riva Silver could be your answer.

Riva Silver is an excellent core build up material. At the same time, it is a great restorative. When all else fails, Riva Silver could be your solution.



## RIVA LUTING

When deciding on a luting cement, there are many types to choose from. Use Riva Luting when you need an easy self curing mix, with high fluoride release, good radiopacity, and adhesion to metal and tooth surfaces.

## RIVA LUTING PLUS

Riva luting Plus is designed for final cementation of metal, PFM and resin crowns, bridges, inlays and onlays plus ceramic inlays and crowns. Riva Luting Plus chemically bonds to dentine, enamel and all types of core material.



# SDI EQUIPMENT

## RADII XPERT

SMARTER DESIGN.  
OPTIMAL CURE EVERY TIME.

Radii Xpert's unique target assist technology enables you to correctly position the light and be confident of the angulation before curing.

**360°**  
ROTATABLE HEAD

**185g**  
LIGHT WEIGHT

**2.5 HOUR**  
RUNTIME



## RADII-CAL CX

COLLIMATED FOR A DEEPER,  
MORE RELIABLE CURE

The collimated beam of the Radii-Cal CX delivers curing uniformity across all curing depths. This ensures a fast and predictable cure for all restorations.



COLLIMATED  
LIGHT



ERGONOMICALLY  
DESIGNED



SMART BATTERY  
TECHNOLOGY

**2+1\*** BUY 2,  
GET 1 FREE



**1+1\*** BUY 1,  
GET 1 FREE

# SDI ALLOYS

## PERMITE

HIGH SILVER NON-GAMMA 2 ADMIX ALLOY

- Superior handling characteristics
- Void-free restorations with no marginal leakage

## GS-80

ECONOMICAL NON-GAMMA 2 ADMIX ALLOY

- High early compressive strength
- Great corrosion resistance

## LOJIC+

WORLDS FIRST PLATINUM MODIFIED SPHERICAL AMALGAM

- Creamy consistency, soft packing and smooth carving
- Very high compressive strength



MAKE  
THE  
SWITCH

BUY 2 GET A  
STELA SYRINGE  
INTRO KIT  
**FREE\***



STELA AUTOMIX INTRO KIT - 8640002

## BUY 1 GET 1 FREE [50 CAPSULE BOX]



**BPA & HEMA FREE**

### RIVA LUTING

When deciding on a luting cement, there are many types to choose from. Use Riva Luting when you need an easy self curing mix, with high fluoride release, good radiopacity, and adhesion to metal and tooth surfaces.



**BPA FREE**

### RIVA LUTING PLUS

Riva luting Plus is designed for final cementation of metal, PFM and resin crowns, bridges, inlays and onlays plus ceramic inlays and crowns. Riva Luting Plus chemically bonds to dentine, enamel and all types of core material.



## SEALANTS

### CONSEAL F

LIGHT CURED FLUORIDE RELEASING RESIN PIT AND FISSURE SEALANT

- High fluoride releasing
- BPA & HEMA free
- Accurate and controlled delivery with an ultrafine tip
- Extremely low viscosity - quickly and deeply penetrate small pits and tight fissures
- Opaque white shade
- 5mL bottle and 1g syringes



**BUY 2 - GET 1 FREE\***

### RIVA PROTECT

SELF-CURING CONVENTIONAL GLASS IONOMER USED AS A SEALANT, LINER AND SURFACE PROTECTOR

- ACP nanotechnology supercharges remineralisation
- Very high fluoride releasing and recharging ability to protect teeth from acid attacks
- Low viscosity for easy placement and pit/fissure penetration
- BPA & HEMA free



**BUY 2 - GET 1 FREE\***

**SDI** | YOUR SMILE. OUR VISION.

facebook.com/sdinainc | instagram.com/sdinainc

**SDI (North America) Inc.**  
1279 Hamilton Parkway  
Itasca, IL 60143

Toll Free 1 800 228 5166  
Fax: 630-361-9222  
usa.canada@sdi.com.au  
www.sdi.com.au

Redeem your free goods by sending your invoice to:  
usa.canada@sdi.com.au or fax 630-361-9222

\*Please allow 2-4 weeks for delivery. Please note offers cannot be combined. Offers cannot be used in conjunction with contract pricing. Valid on invoices dated January 1st - March 30th, 2025. All claims for free goods must be made within 30 days from the end of promotion date. Purchases must be on one order to qualify for free goods. Free products must be of equal or lesser value. Offers are valid in the US only.

#### EASTERN REGION

**JUSTIN JOURDAN**  
Eastern Regional Sales Manager  
Cell: [224] 240-1791  
Justin.Jourdan@sdi.com.au

**ANDREW POLK**  
NYC Metro and Northern NJ  
Cell: [718] 308-5588  
Andrew.Polk@sdi.com.au

**SHANTELE BYRD**  
Michigan, Northern IN  
Cell: [313] 520-4114  
Shantelle.Byrd@sdi.com.au

**MARK GUZIOR**  
MA, ME, NH, CT, VT, RI  
Cell: [603] 553-3121  
Mark.Guzior@sdi.com.au

**BRENDA LOPEZ**  
Florida  
Cell: [561] 358-9291  
Brenda.Lopez@sdi.com.au

**CARRIE COOMER**  
OH, KY, Southern IN  
Cell: [937] 214-7410  
Carrie.Coomer@sdi.com.au

**DINORAH ROBLES**  
Central/Northern IL, WI  
Cell: [630] 542-7988  
Dinorah.Robles@sdi.com.au

**JIM POTEAT**  
GA, SC, NC, TN  
Cell: [704] 995-7303  
Jim@Poteatdentalsolutions.com

**MIKE MATUCH**  
Upstate NY, Erie/Pittsburg, PA, WV  
Cell: [716] 913-8354  
Michaelmatuch@yahoo.com

**LOUIE KALOUDIS**  
MS, AL, DC, VA, AR, LA  
Cell: [630] 363-9224  
Louie.Kaloudis@sdi.com.au

**VINCENT GALASSO**  
PA, DE, SOUTHERN NJ, MD  
Cell: [717] 395-0599  
Vincent.Galasso@sdi.com.au

#### WESTERN REGION

**DAN NIEHOFF**  
Regional Sales & National Accounts  
Manager - Western Region  
Cell: [424] 212-3742  
Dan.Niehoff@sdi.com.au

**CLAUDIA CARRILLO**  
Northern California, Reno, NV  
Cell: [408] 893 8728  
Claudia.Carrillo@sdi.com.au

**ALICE LUPU**  
Los Angeles, Ventura, Kern Counties  
Cell: [213] 330-9341  
Alice.Lupu@sdi.com.au

**KAREN ZAFFINO**  
CO, UT, WY, NM, El Paso, AZ  
Cell: [720] 635-3400  
Alice.Lupu@sdi.com.au

**JENNIFER BOLTON**  
DC, San Diego, Las Vegas, HI  
Cell: [949] 413-9035  
Jennifer.Bolton@sdi.com.au

**KARLYN RASMUSSEN-DODD**  
TX, OK  
Cell: [832] 928-6938  
Karlyn.Rasmussen-dodd@sdi.com.au

**TIM VANWYCHEN**  
MN, ND, IA, SD, NE  
Cell: [651] 231-2801  
VanWychen@hotmail.com

**DOUG SCHROEDER**  
MO, KS, Southern IL  
Cell: [314] 422-0061  
dsildt@charter.net